



Antenna 10.0-15.0 GHz 15 dB Gain

Description

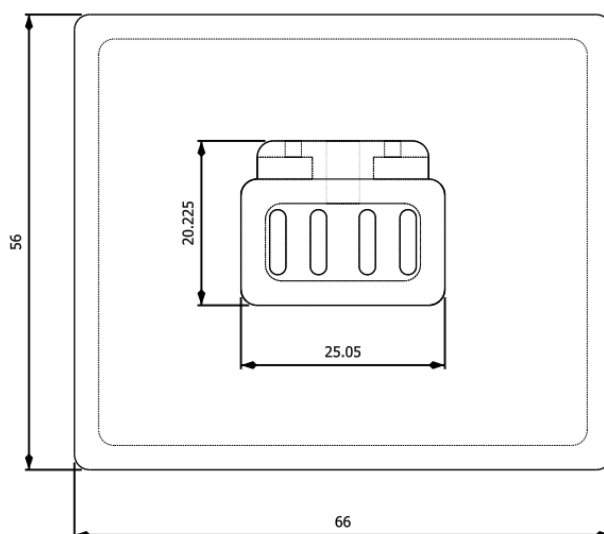
This Horn antenna operates for a frequency from 10.0 GHz to 15.0 GHz. It offers a typical value of 15 dB gain. The particularity of this antenna is its lightness. Indeed, this antenna is lighter than a machining one due to the realization by a 3D printer.



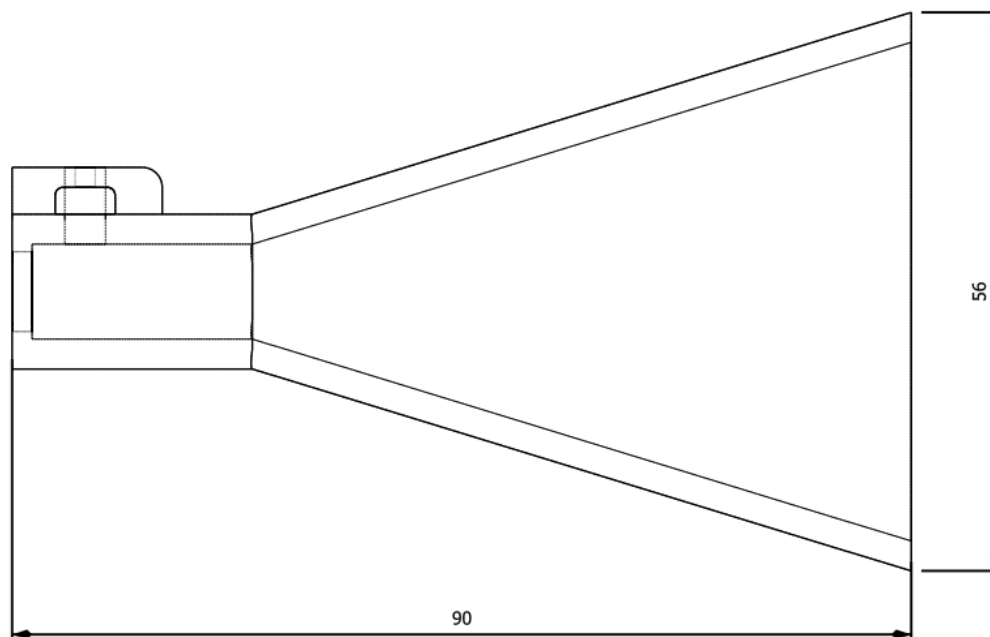
Technical specifications

Frequency (GHz)	10.0-15.0
Simulated Gain (dB)	15 Typ.
VSWR max	1.45
Connector	SMA-F
Waveguide	WR75
Size (mm)	66*56*90
Weight	-

Dimensional Drawing

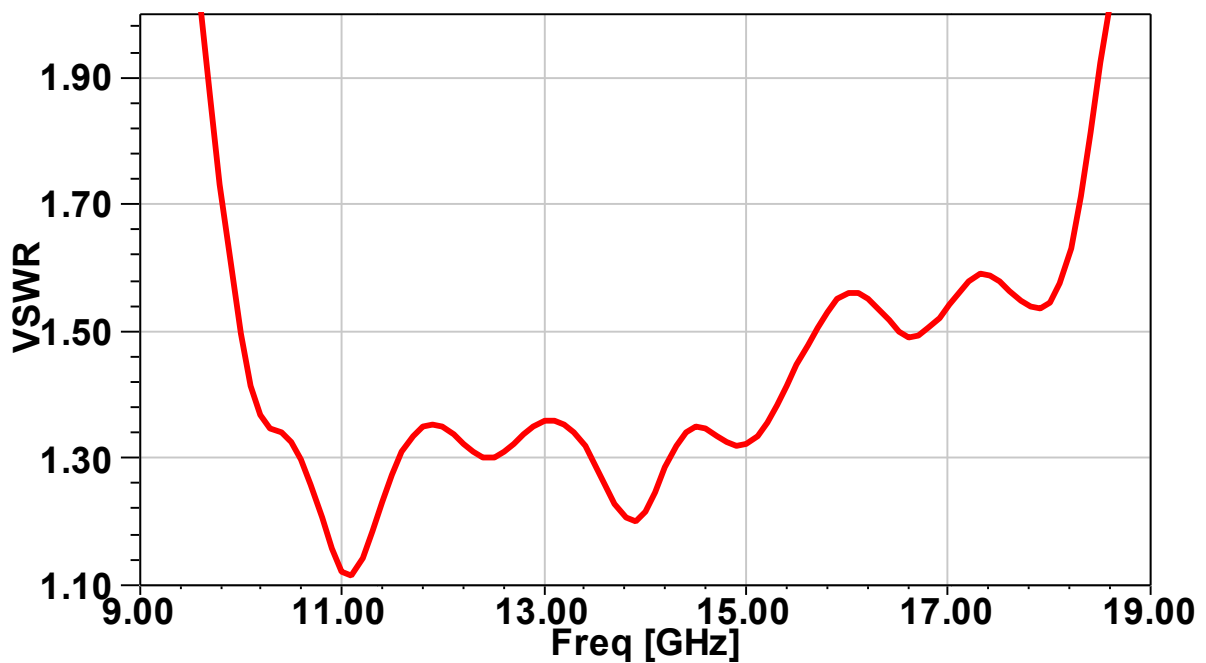


Antenna 10.0-15.0 GHz 15 dB Gain



Simulation results

1. VSWR





Antenna 10.0-15.0 GHz 15 dB Gain

elliptika®

2.Gain

